

Overview: Grant Writing Institute 2014 and Research Development Services

Susan Carter, J.D.

Director, Research Development Services
University of California Merced
<http://rds.ucmerced.edu>

UCMERCED

www.ucmerced.edu

Faculty GWI 2014

- Introductions
- Overview of GWI 2014
- RDS and UC Merced services and Resources

Agenda Faculty GWI 2014

- Monday 3/31 KL 232: Overview and Research 'Eco-system'
- Tuesday 4/1 Garden View Dining Room: Grantsmanship for the Researcher, Parts 1 and 2
- Wednesday 4/2 Garden View Dining Room:
 - Grantsmanship for the Researcher, Part 3
 - Team Science: *Proposals, Planning, Leadership and Tools*
- Thursday 4/4 KL 232:
 - Data Management Plans
 - FOCUS on NSF CAREER Proposals
- Friday 4/5 KL 232:
 - Trends in Federal Funding and Getting to Know the Agencies
 - The Proposal Review Process; Panel of Reviewers
 - Reception

Research Development Services, UC Merced

Independent Unit in OR; Director reports to VCRED.

Works closely with other units in OR.

Location: Third floor, Kolligian Library and SE Building Room 308

Staff:

Susan Carter, Director

Vanity Campbell, Research Development Officer

James Fickett, Research Development Officer

Sara McDonnell, Research Development Officer

Carmen Vien, Analyst

Kelly Bolcavage, Analyst

Contact: rds@ucmerced.edu; <http://rds.ucmerced.edu/>

RD Officers Primary Focus Areas

- **Jim Fickett**
 - Natural Sciences
 - Engineering, particularly UCM Solar
- **Vanity Campbell**
 - Engineering
 - Public Health, HSRI
 - NIH Training Grants
- **Sara McDonnell**
 - Social Sciences, Humanities and the Arts
 - SNRI
 - NSF Training Grants

What is Research Development?

“Research Development encompasses a set of strategic, proactive, catalytic, and capacity-building activities designed to facilitate individual faculty members, teams of researchers, and central research administrations in attracting extramural research funding, creating relationships, and developing and implementing strategies that increase institutional competitiveness.”

-See <http://www.nordp.org/>

Research Development Services, UC Merced

Goals:

- Expand UC Merced's capacity to pursue major multi and interdisciplinary team based research initiatives.
- Promote growth in campus external research funding.

Primary focus:

- Building relationships with funding agencies and potential collaborators.
- Large interdisciplinary, multi-disciplinary, collaborative and multi-institution proposals.
- Helping new researchers obtain funding support (and researchers to obtain funding in new areas).
- Proposals to expand and support research training.

Services offered to UC Merced Faculty:

- Individual and/or group consultations welcomed and encouraged; your first point of contact for RD and pre-award services.
- Identification of and dissemination of information re: funding opportunities; including targeted dissemination and customized searches.
- Development of relationships with extramural research funders.
- Advice and technical assistance re: funders' proposal policies.
- Assisting/advising re: responses to new/emerging/changing funding opportunities and environments.
- Assistance with building relationships with non-research units within UC Merced.

Services offered, contd.

- Research team building and coordination and assistance identifying potential collaborators (both at UC Merced and elsewhere; may include academic, community, government and/or industry partners).
- Support for planning, coordinating and submitting large and/or complex proposal efforts
- Provision of 'boilerplate' language.
- Proposal writing and editing that emphasizes effective communication and responsiveness to the funder requirements.

New at RDS....

- Full pre-award services in submission of extramurally funded research proposals.
- These services include:
 - Additional training and technical assistance;
 - Data entry, form preparation and budget construction
 - Coordination of collaborators and cooperating institutions.

Resources for Grantstmanship at UC Merced



UC Merced Research Institutes and Centers (partial list):

- Sierra Nevada Research Institute: <https://snri.ucmerced.edu/snri>
- Health Sciences Research Institute (HSRI): <http://hsri.ucmerced.edu/>
- UC Advanced Solar Technologies Institute (UC Solar): <http://ucsolar.org/>
- CITRIS: Center for Information Technology Research in the Interest of Society: <https://eng.ucmerced.edu/soe/facandres/intra-campus/eng-res-citris>
- Center for the Humanities: <http://crha.ucmerced.edu/>
- Stem Cell Research Consortium:
<http://stemcells.ucmerced.edu/pub/stemcelldocs/home.html>
- Resource Center for Community Engaged Scholarship at UC Merced (ReCESS):
<http://communityresearch.ucmerced.edu/>
- Spatial Analysis & Research Center: <http://sparc.ucmerced.edu/>

RDS Materials and Newsletter list!

- Monthly Grant Writing newsletter from *Academic Research Funding Strategies*
- Emails on funding opportunities
- Library of materials
- More at <http://researchdev.ucmerced.edu>



COS PIVOT

- ❑ Community of Science (COS) Pivot:
 - ❑ Is a multi-disciplinary searchable funding opportunities database
 - ❑ Helps identify potential collaborators
 - ❑ Matches faculty with funding opportunities
- ❑ Represents over 40,000 private, federal, and international funding opportunities
- ❑ RDS can assist in customized searches.

Resources for more institutional information about UC Merced...

Institutional Research and Decision Support (IRDS)

(see <http://ipa.ucmerced.edu> for an excellent list of links to more information about UC and about higher education generally).
Custom data runs available with plenty of lead time (contact IPA staff or RDS)



CAMPUS ENROLLMENT BY ETHNICITY

Ethnicity	Fall 2005	Fall 2006	Fall 2007	Fall 2008	Fall 2009	Fall 2010	Fall 2011
African-American	53	73	110	166	232	273	336
Asian	309	440	586	837	1,052	1,238	1,438
Hispanic	209	328	523	785	1,058	1,482	1,871
Native American	7	9	14	17	23	20	18
Pacific Islander	6	5	8	14	17	27	33
White	230	331	469	663	774	941	1061
Nonresident Alien	8	20	53	95	108	120	131
Two or more races	N/A	N/A	N/A	N/A	N/A	78	164
Decline to State/Unknown	53	80	108	141	150	202	146
Total	875	1,286	1,871	2,718	3,414	4,381	5,198

CAMPUS ENROLLMENT % BY ETHNICITY

Ethnicity	Fall 2005	Fall 2006	Fall 2007	Fall 2008	Fall 2009	Fall 2010	Fall 2011
African-American	6.1%	5.7%	5.9%	6.1%	6.8%	6.2%	6.5%
Asian/Pacific Islander	35.3%	34.2%	31.3%	30.8%	30.8%	28.3%	27.7%
Hispanic	23.9%	25.5%	28.0%	28.9%	31.0%	33.8%	36.0%
Native American	0.8%	0.7%	0.7%	0.6%	0.7%	0.5%	0.3%
Pacific Islander	0.7%	0.4%	0.4%	0.5%	0.5%	0.6%	0.6%
White	26.3%	25.7%	25.1%	24.4%	22.7%	21.5%	20.4%
2 or more races	N/A	N/A	N/A	N/A	N/A	2.7%	2.5%
Nonresident Alien	0.9%	1.6%	2.8%	3.5%	3.2%	1.8%	3.2%
Decline to State/Unknown	6.1%	6.2%	5.8%	5.2%	4.4%	4.6%	2.8%
Total	100.0%	100.0%	100.0%	100.0%	100.0%	100.0%	100.0%

Note: Fall 2005 enrollment figures do not include students admitted under visitor status due to Hurricane Katrina

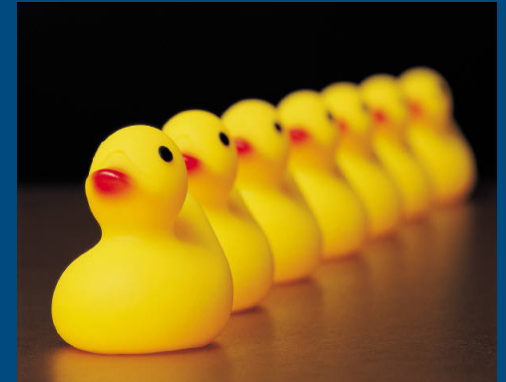
Source: IPA Enrollment Table

Prepared by Institutional Planning & Analysis

Source: UC Merced IRDS:
<http://ipa.ucmerced.edu/>

Internet Resources...

But first, a word of caution:



- The funding organization's guidelines should be your bible.
- Many funding agencies will no longer read a proposal that doesn't strictly adhere to the guidelines.
- Read the instructions first, and then read them again (and yet one more time, and use them as an outline).

Internet Resources, contd. (a small sample)....

Writing guides:

- **University of Michigan Proposal Writer's Guide:**
 - <http://orsp.umich.edu/proposals/PWG/pwgcomplete.html>
 - Directions are clear and to the point; excellent for all disciplines and funding agencies; some info UM specific
- **The Foundation Center Proposal Writing Short Course:**
 - <http://foundationcenter.org/getstarted/tutorials/shortcourse/index.html>
 - Good outline for foundation proposals
- **The Art of Writing Proposals:**
 - Tips from the Social Science Research Council; useful writing strategies for other disciplines as well.
 - <http://www.ssrc.org/publications/view/7A9CB4F4-815F-DE11-BD80-001CC477EC70/>

More resources...

- **Comprehensive List of Collaborative Funding Mechanisms:**
 - http://www.nordp.org/index.php?option=com_content&view=article&catid=19%3Adefault&id=37%3Acollaborative-funding-opportunities&Itemid=112
- **Rockefeller University Research Funding Trends (updated March 2012)**
 - http://www.rockefeller.edu/sr-pd/index.php?page=Issues_Trends_in_Academic_Rese
- **Strategy for NIH Funding (NIAID):**
 - <http://www.niaid.nih.gov/researchfunding/grant/strategy/pages/default.aspx>
- **Sample NIH Data plan (NIAID):**
 - <http://www.niaid.nih.gov/researchfunding/tool/pages/datasharingex.aspx>

Evaluation Resources....

- NSF User–Friendly Handbook for Project Evaluation:

- <http://www.nsf.gov/pubs/2002/nsf02057/>

(Updated January 2013)

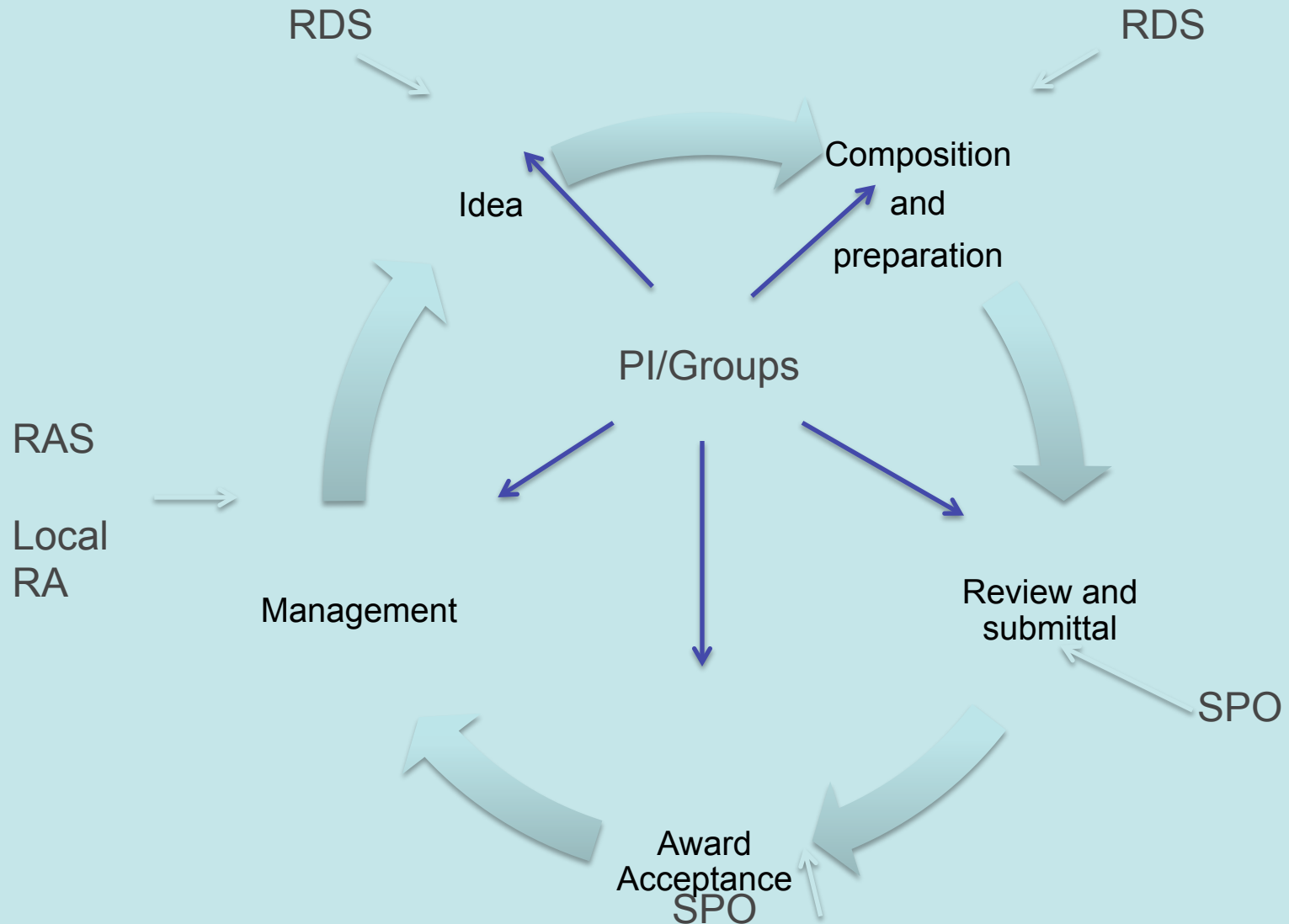
- <http://www.nordp.org/assets/resources-docs/programevaluators.pdf>
- <http://oerl.sri.com/>

Overview

UC Merced Research 'Ecosystem'

- Susan Carter, RDS
- Thea Vicari and Jennifer Teixeira, SPO
- Autumn Salazar, RAS

Maximizing Institutional Support: the UC Merced Research Administration Eco-System



The UC Merced Research Administration Eco-System, contd.



Coming soon: Cayuse SP

- Cayuse 424: electronic submission to federal agencies (available now in RDS).
- Cayuse SP: streamlined electronic preparation, development, routing and management of proposals (Fall 2014).
- Eliminates most paper forms!
- More information coming very soon.
- Let RDS know if you want to beta test SP.

Discussion and Q & A

